



Dynasec Enterprise™ Basel II Module

Quantify operational risks in accordance with the Basel II accord and establish a continuous risk management framework.

Product Description

The Basel II Capital Accord revises international bank capital requirement standards that measure underlying risk. Basel II was created to promote greater consistency in the way banks and banking regulators approach risk management across national borders. Accordingly banks must take a broader view of risk by including operational risk as a factor in determining capital requirements .

Dynasec Enterprise™ is an easy to use, web-based enterprise class application that enables banks to quantify operational risks. With Securitive, banks can continuously manage and control the risk assessment and risk mitigation processes.

Dynasec Enterprise™ provides a comprehensive work cycle that is composed of 4 stages:

1. Definition Stage

- Define organizational structure
- Define locations
- Define users and rights
- Define projects and alerts
- Configure data import

2. Documentation Stage

- Collect and quantify incidents
- Define process and sub processes
- Define risks
- Define controls
- Asses controls status

4. Reporting Stage

- View dashboards and reports
- Perform simulations
- Define remediation plan
- Distribute and follow tasks
- Export information

3. Testing Stage

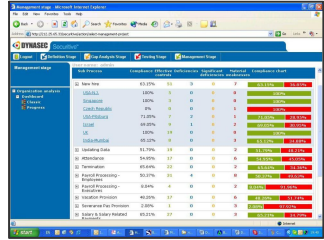
- Perform testing
- Describe findings
- Write recommendations
- Attach evidence
- Provide remarks



Features

Dynasec Enterprise™ provides a complete package to manage Basel II operational risk and enables the user to save up to 70% of compliance management costs!.

- ▶ **Automated Controls:** Improving and shortening the on-going testing process by defining automatic controls that connect to operational systems, performs automatic testing, and provides you with the most accurate information.
- ▶ **Pre-Defined Database:** Providing thousands of pre-defined risks and controls, organized in processes and sub processes. Enabling quick and in depth creation of a relevant framework for each entity.
- ▶ **Organizational Framework:** Automatically linking the multilevel organizational structure to risk frameworks, maintaining integrity even as organizations evolve.
- ▶ **Document Management:** Manages policies, procedures, tests, evidence, and any other documents, on corporate level, location level, risk and control levels.
- ▶ **On Going Management:** Enabling valid period-to-period comparatives and preserving original context, including complete control framework and documentation, testing, descriptive information, organizational structure and assessment data.
- ▶ **Assessment, Testing and Remediation:** Creating and managing all required forms, dialogues and remediation/action plans, mapped to organizational and control frameworks for accurate, real-time results.
- ▶ **Reporting / Business Intelligence:** Cutting across entities, control cycles, time periods, sectors, accounts and class of business with executive dashboard, pre-defined customizable reports and graphs; integrating data warehousing with financial reporting and analysis tools of choice.
- ▶ **Audit Logs:** Tracking all changes to framework and organizational structure, action plans, test work, etc., including person, date, time and before and after changes to content, data and attributes.



Key Benefits

- ▶ Implement a central risk management platform, save time and money.
- ▶ Make Basel II management sustainable.
- ▶ Make internal control compliance an integral part of the company's culture.
- ▶ Share information with other compliance and risk management processes.
- ▶ Provide accurate reports by using sophisticated dashboards.
- ▶ Create a central body of evidence for all compliance activities
- ▶ Drive consistency and standardization in business processes.

Advantages

- ▶ **Innovative Architecture** - A common repository that enables management of multiple compliance processes in one system.
- ▶ **Advanced Design** - Thousands of pre-build risks and controls that reduce your time to compliance.
- ▶ **Easy Access** - Web based application that is user friendly and easy to use.
- ▶ **Quality Performance** - Fast implementation and easy integration with existing infrastructure.
- ▶ **Robust Operation** - Enterprise wide solution that enables participation of thousands of employees in the process .

