



Dynasec Enterprise™ Internal Audit Module

Enables auditors to manage various audit processes within a single system, standardize audits, preserve and share information.

Product Description

Dynasec Enterprise™ Internal Audit provides a paperless audit process. Internal auditors are able to easily conduct audits, generate reports faster and present audit results graphically .

Dynasec Enterprise™ provides a comprehensive framework for the internal audit process that incorporates international best practices and standards. **Securitive™** records all aspects of the internal audit process from the very early stage of preliminary risk assessment, through the establishment of perennial and annual audit plans, to the performance of audit activities and remediation plans. Business units receive better reports in a more timely manner and require less time to review and analyze them once the audit is complete.

Dynasec Enterprise™ provides a comprehensive work cycle that is composed of 4 stages:

1. Definition Stage

- Define organizational structure
- Define locations
- Define users and rights
- Define projects and alerts
- Configure data import

2. Risk Assessment Stage

- Collect and quantify incidents
- Define process and sub processes
- Define risks
- Define controls
- Asses controls status

4. Reporting Stage

- View dashboards and reports
- Perform simulations
- Define remediation plan
- Distribute and follow tasks
- Export information

3. Audit Stage

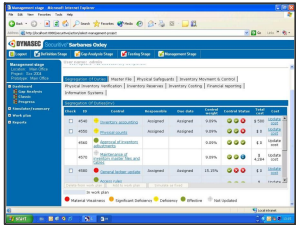
- Define perennial audit plan
- Define annual audit plan
- Define audit templates
- Perform audit activities
- Document audit results

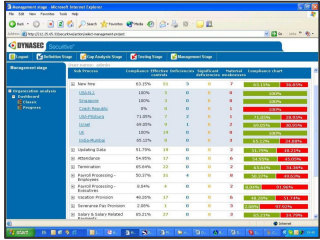


Features

Dynasec Enterprise™ provides you with a complete package to manage audit processes. **Securitive™** provides a comprehensive functionality that enables auditors to conduct the audit processes easier and faster.

- ▶ **Automated Audit Plan:** Improving and shortening the process of defining perennial and annual audit plans, by utilizing a configurable process built in automated audit planning engine.
- ▶ **Pre-Defined Database:** Providing thousands of pre-defined risks and controls, organized in processes and sub processes. Enabling quick and in depth creation of a relevant framework for each entity.
- ▶ **Organizational Framework:** Automatically linking the multilevel organizational structure to risk frameworks, maintaining integrity even as organizations evolve.
- ▶ **Document Management:** Manages policies, procedures, tests, evidence, and any other documents, on corporate level, location level, risk and control levels.
- ▶ **On Going Management:** Enabling valid period-to-period comparatives and preserving original context, including complete control framework and documentation, testing, descriptive information, organizational structure and assessment data.
- ▶ **Assessment, Testing and Remediation:** Creating and managing all required forms, dialogues and remediation/action plans, mapped to organizational and control frameworks for accurate, real-time results.
- ▶ **Reporting / Business Intelligence:** Cutting across entities, control cycles, time periods, sectors, accounts and class of business with executive dashboard, pre-defined customizable reports and graphs; integrating data warehousing with financial reporting and analysis tools of choice.
- ▶ **Audit Logs:** Tracking all changes to framework and organizational structure, action plans, test work, etc., including person, date, time and before and after changes to content, data and attributes.





Key Benefits

- ▶ Standardize audit processes, share and preserve information.
- ▶ Spend more time auditing and less time recording.
- ▶ Manage audit findings and recommendations within a single database.
- ▶ Share information with other compliance and risk management processes.
- ▶ Provide better reports by using sophisticated dashboards.
- ▶ Design an audit report and use it as a template for future reporting.
- ▶ Analyze audit reports with integrated analysis engine.

Advantages

- ▶ **Innovative Architecture** - A common repository that enables management of multiple compliance processes in one system.
- ▶ **Advanced Design** - Thousands of pre-build risks and controls that reduce your time to compliance.
- ▶ **Easy Access** - Web based application that is user friendly and easy to use.
- ▶ **Quality Performance** - Fast implementation and easy integration with existing infrastructure.
- ▶ **Robust Operation** - Enterprise wide solution that enables participation of thousands of employees in the process .

