



Securitive™ Enterprise 357 Module

Performs ongoing risk management processes to determine the proper controls to be implemented on specific data assets based on their use and risk.

Product Description

The Bank of Israel's Directive 357, which involves technology disclosure in Israeli banking, is concerned with the auditing and implementation of banking technologies relating to the overall banking system.

Directive 357 is concerned with risk management and analysis, data security, data integrity, system security and audit trails.

This directive, as published by the Central Bank of Israel, requires banks to institute a set of IT management controls and to continually assess their implementation.

Securitive™ Enterprise is an easy to use, web based enterprise class application that enables you to simplify, automate, continuously manage and control your compliance processes.

Securitive™ provides a comprehensive work cycle that is composed of 4 stages:

1. Definition Stage

- Define organizational structure
- Define Information Assets
- Define users and rights
- Define projects and alerts
- Configure data import

2. Documentation Stage

- Collect and quantify incidents
- Define process and sub processes
- Define risks
- Define controls
- Asses controls status

4. Reporting Stage

- View dashboards and reports
- Perform simulations
- Define remediation plan
- Distribute and follow tasks
- Export information

3. Testing Stage

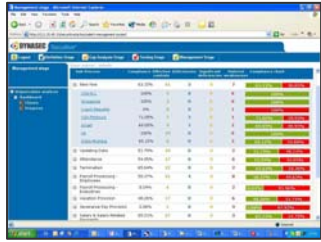
- Perform testing
- Describe findings
- Write recommendations
- Attach evidence
- Provide remarks



Features

Securitive™ is the definitive solution for on-going administration of information security risk management. Securitive™ provides a comprehensive functionality and enables interoperability with existing systems to ensure efficient management and supervision.

- ▶ **Automated Controls:** Improving and shortening the on-going testing process by defining automatic controls that connect to operational systems, performs automatic testing, and provides you with the most accurate information.
- ▶ **Pre-Defined Database:** Providing thousands of pre-defined risks and controls, organized in processes and sub processes. Enabling quick and in depth creation of a relevant framework for each entity.
- ▶ **Organizational Framework:** Automatically linking the multilevel organizational structure to risk frameworks, maintaining integrity even as organizations evolve.
- ▶ **Document Management:** Manages policies, procedures, tests, evidence, and any other documents, on corporate level, location level, risk and control levels.
- ▶ **On Going Management:** Enabling valid period-to-period comparatives and preserving original context, including complete control framework and documentation, testing, descriptive information, organizational structure and assessment data.
- ▶ **Assessment, Testing and Remediation:** Creating and managing all required forms, dialogues and remediation/action plans, mapped to organizational and control frameworks for accurate, real-time results.
- ▶ **Reporting / Business Intelligence:** Cutting across entities, control cycles, time periods, sectors, accounts and class of business with executive dashboard, pre-defined customizable reports and graphs; integrating data warehousing with financial reporting and analysis tools of choice.
- ▶ **Audit Logs:** Tracking all changes to framework and organizational structure, action plans, test work, etc., including person, date, time and *before and after* changes to content, data and attributes.



Key Benefits

- ▶ Implements security policy and procedures in business processes
- ▶ Assures that security control management is sustainable
- ▶ Promotes security control compliance as an integral part of the company's culture
- ▶ Creates a central body of information for all security activities
- ▶ Employs a proactive framework for security management

Advantages

- ▶ **Innovative Architecture** - A common repository that enables management of multiple compliance processes in one system.
- ▶ **Advanced Design** - Thousands of pre-build risks and controls that reduce your time to compliance.
- ▶ **Easy Access** - Web based application that is user friendly and easy to use.
- ▶ **Quality Performance** - Fast implementation and easy integration with existing infrastructure.
- ▶ **Robust Operation** - Enterprise wide solution that enables participation of thousands of employees in the process .

